

STD WORKING LAMP WITH HANDLE

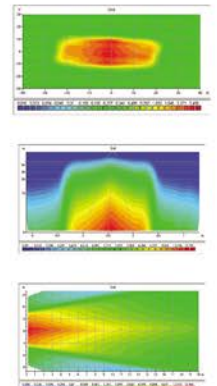
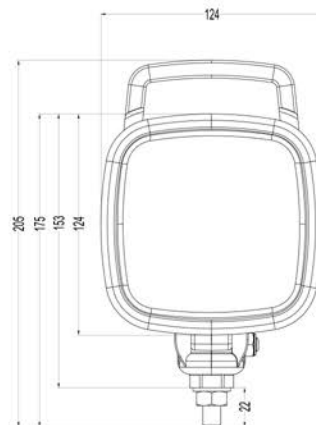
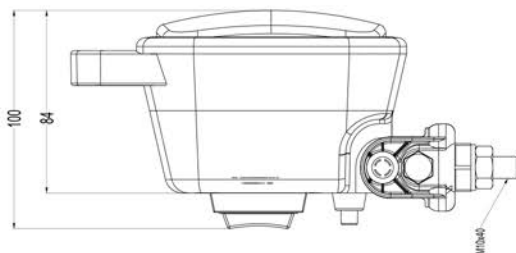


Features

- 2K Injection technology for vibration absorbing and good sealing on 3 areas surface
- TSEK certificated
- Esthetic and elegant design
- Shock resistant design
- Hardened glass lens
- With waterproof on-off switch
- Plastic hinge mechanism
- Easy bulb change with back cover
- High illumination properties with optimum reflector design
- %100 tested before delivery
- Sealed and protected on/off switch
- 360-degree rotation design
- ~ 600 Lumen lighting values
- Energy consumption ~55w-70w



PARTS	PARTS NAME	PARTS NO
	WORKING LAMP WITH HANDLE	0001.3701.XXX
	WORKING LAMP WITH HANDLE CLEAR LENS	0001.3701.XXX
	WORKING LAMP WITH HANDLE SPIRAL CABLE & LIGHTER SOCKET	0001.3705.XXX
	WORKING LAMP WITH HANDLE EXTRA LONG CABLE & LIGHTER SOCKET	0001.3705.XXX
	WORKING LAMP WITH HANDLE EXTRA LONG CABLE & BATTERY CLIP	0001.3705.XXX
	WORKING LAMP WITH HANDLE & TOOL BOX	0001.3705.XXX
	WORKING LAMP WITH HANDLE SS	0001.3701.008



BULB	
12 V 55 W	0001.2066.000
24 V 70 W	0001.2046.000

BACK COVER	
With on-off switch	0001.3701.XXX